

Contact Dr. Holland to set up a
free 15-minute consultation!

Holland@ExpertPsychSolutions.com
(615)442-6229



Evaluation & Assessment Case Studies



Dr. Jason M. Holland
Clinical Psychologist
Research Consultant



Development of a Financial Stress Assessment for iGrad/Enrich



Project: Developed an assessment of subjective financial stress for [iGrad/Enrich](#) that could serve as an outcome in ongoing QA/QI efforts to evaluate their financial wellness products

Role: Lead Consultant

Methods:

- Conducted interviews with employees and content experts to generate a pool of relevant items
- Designed and implemented a study to test items
- Performed analyses to generate an assessment tool that included the eight best-performing items

Actionable Insights:

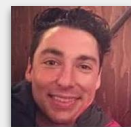
- Produced a customized assessment that is now being used worldwide as a self-discovery tool for iGrad/Enrich users and as an outcome in their ongoing QA/QI efforts
- Identified avoidance coping as a robust predictor of financial stress, providing direction for future wellness products

Testimonials



Kris Alban
Executive VP

“Overall, Jason exceeded our expectations in every way. He brought a level of expertise and professionalism to the project that was unmatched...”

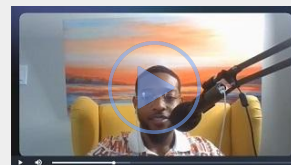


Dan Goniprow
VP Product

“Jason’s deep expertise, original ideas, and reassuring thoroughness make him an outstanding collaborator on wellness initiatives.”

Learn More

Watch a [podcast](#) with Dr. Holland & Enrich leadership





Evaluation of Hospice Satisfaction Among Hispanic Families

Project: Collaborated with Nathan Adelson Hospice to evaluate satisfaction among Hispanic families, a growing segment of their patient population

Role: Principal Investigator

Methods:

- Analyzed archival satisfaction data from ~3000 families
- Recruited a team of bilingual staff to interview ~30 families
- Oversaw analysis of interviews yielding a distillation of themes

Actionable Insights:

- Archival data revealed that Hispanic families were satisfied overall but were somewhat less satisfied with emotional and spiritual support services, highlighting an opportunity for program refinement.
- Analysis of interview data clarified preferences for emotional and spiritual support, providing specific directions for how to respond.
- For example, Hispanic families expressed preferences for Catholic-based services and inclusion of their “church family.”

Testimonial



Nora Luna
Director of
Education

“These findings not only informed our decisions for improving patient care but also resulted in multiple publications, establishing our organization as a thought leader in the industry.”

Learn More

Read peer-reviewed research stemming from this project:





Evaluation of a VA Residential PTSD Program



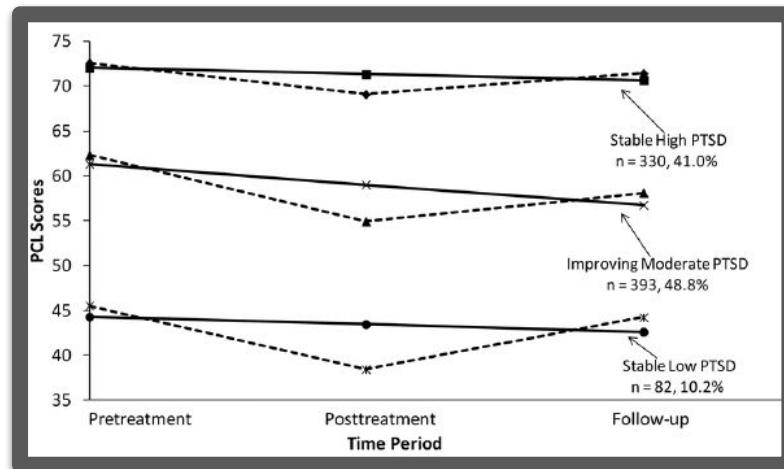
Project: Collaborated with VA to assess the effectiveness of their residential PTSD program and identify subgroups that may need alternate or supplemental services

Role: Lead Statistician & Coauthor

Methods: Analyzed archival longitudinal data from 800+ Veterans using latent class growth analysis

Actionable Insights:

- Identified three unique subgroups of Veterans with different treatment needs
- Two subgroups showed little change in PTSD before and after the program, suggesting the need for a refined approach with these Veterans
- Recommended refined screening procedures for identifying Veterans who may need additional or alternate services



Learn More

Read peer-reviewed research stemming from this project in [PLOS ONE](#)





Evaluation of the Long-Term Impact of Alzheimer's Caregiver Interventions



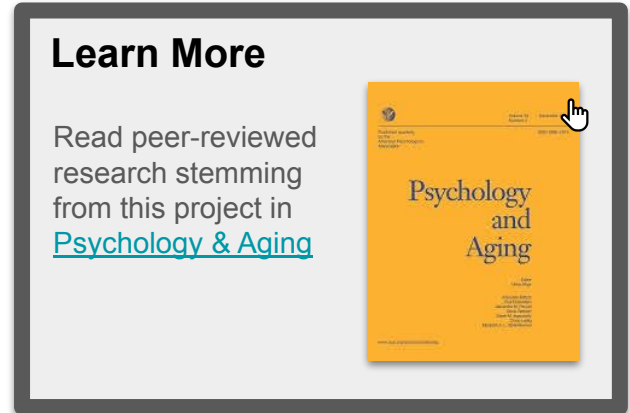
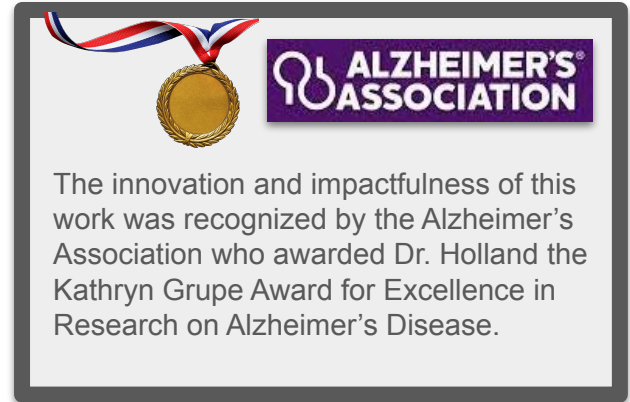
Project: Examined the long-term benefits of caregiver interventions across six treatment sites in a NIA-funded study

Role: Lead Statistician & Lead Author

Methods: Implemented a novel coding procedure to test the impact of different intervention strategies. Then performed hierarchical linear modeling with data from 200+ caregivers to compare the long-term efficacy of these different strategies.

Actionable Insights:

- Intervention strategies focused on challenging negative thoughts and modifying problematic behaviors were most effective for mitigating complicated grief symptoms after the care recipient's death.
- Interventions focused on improving caregivers' environment (e.g., increasing social support) were most effective for preventing long-term depressive symptoms.





Evaluation of Programs to Improve Attendance at Substance Abuse Treatment Sessions for Mothers Referred by CPS

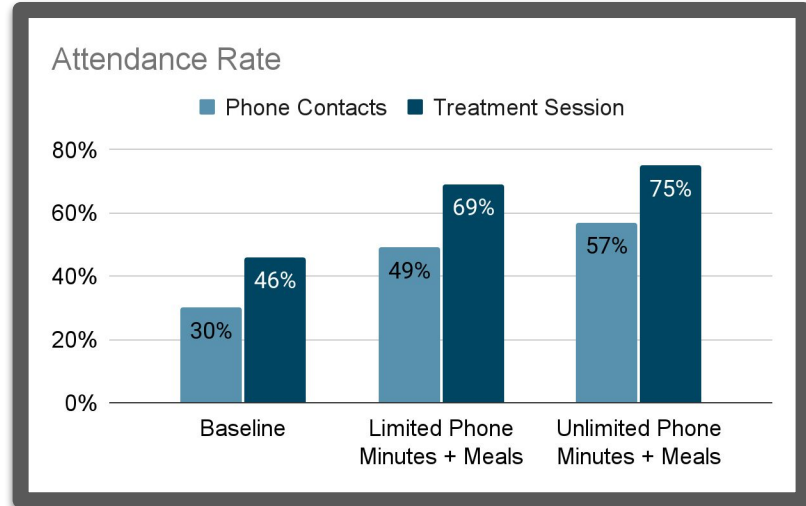
Project: Evaluated the effectiveness of an incentive-based program to improve attendance rates of mothers referred to substance abuse treatment by CPS

Role: Statistical Consultant & Coauthor

Methods: Conducted analyses on session attendance data from 35 mothers who first received no incentives (baseline) and then received cell phone and meal incentives that were contingent on session attendance

Actionable Insights:

- Providing meals plus a cell phone with prepaid minutes significantly improved attendance rates for both phone contacts and treatment sessions.
- Offering unlimited (versus limited) cell phone minutes did not significantly improve attendance rates.



Learn More

Read peer-reviewed research stemming from this project in the [Journal of Family Social Work](#)

